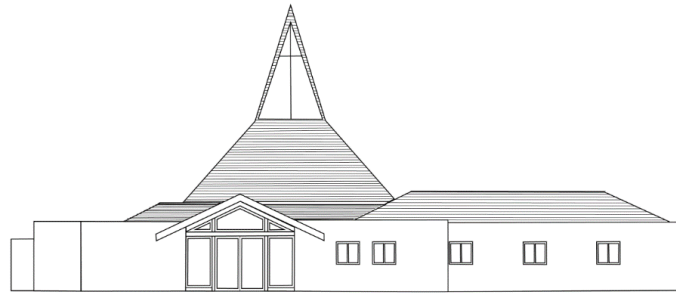


Building for the Future: Christ Church Community Project

Update 25th September 2023



Building work is starting on site

Lexden Contracts Ltd has been appointed and will be setting up on Monday 23rd October 2023.

They will be starting with the extensions on the car park side of the building. The car park will be closed, apart from two spaces for disabled visitors.

Please leave these spaces for those who need them!

The main entrance doors from the car park and part of the entrance area will be closed. Initially, all other areas inside the building will be available. We will update you of any changes as work progresses.

Entry for activities in the Main Space or Balcony will be through the lower (garden) entrance doors.

Entry for the Preschool and for activities in the Headgate and Meeting rooms will be through the preschool gate.

The project will take 6 months to complete and there is no escaping the disruption for our building users and our immediate neighbours, with additional on road parking.

Thank you for your patience!